



INDUSTRY



SPECIAL QUALITIES ARE
OUR STANDARD

OUR COMPANY

BENEFITS IN ALL SHAPES AND SIZES

Thermoplastic Elastomers (TPEs) are the materials used to make progress. Compounds from KRAIBURG TPE will open up all sorts of new opportunities in product development and processing making production efficient for you as well.

The solutions provided by KRAIBURG TPE will enable you to meet the highest requirements. Our company not only offers high-quality specially custom-engineered products, but also provides a unique level of comprehensive customer service.

The company's motto, "CUSTOM-ENGINEERED TPE AND MORE", is meant to be taken literally. Our goal is to identify the challenges you face with you and support you at all times anywhere in the world.





THE MARKET

GETTING TO GRIPS WITH EVERYTHING

Thermoplastic elastomers (TPEs) are playing an increasingly important role in industrial applications. They improve the functionality of products and give them an appealing appearance. TPEs also provide optimal touch qualities making specific designs possible and increasing the value of the products.

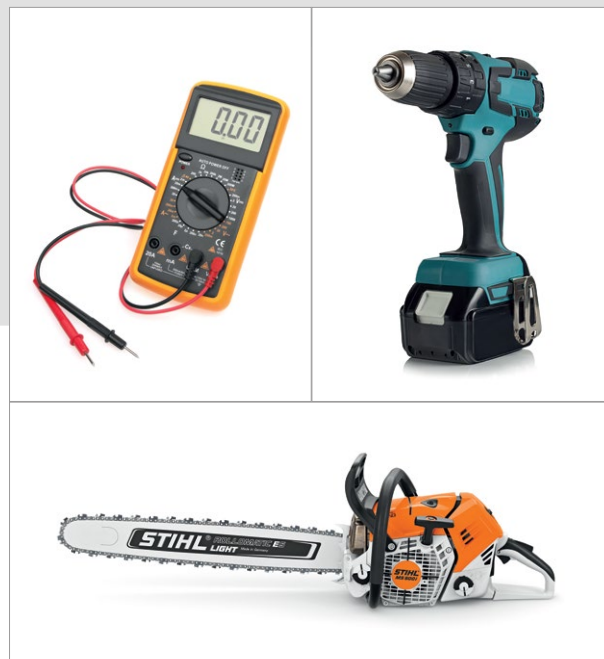
KRAIBURG TPE has developed compounds specifically tailored to industrial applications that are as multifaceted as the industry itself. This is highlighted in diverse segments such as the electronics, building and sanitary sectors.

When functional integration and design require compounds that are optimum for multi-component parts, you can be confident that KRAIBURG TPE materials will be the perfect choice for your product. In addition, our specially developed TPEs are fully compliant with flame retardation and drinking water regulations.

With a low density of up to 0.7 g/cm^3 , our Lightweight TPE ensures weight-reduced components and end products in various market segments.

APPLICATION AREAS

GETTING THE JOB DONE EVERYWHERE



TOOLS

- Garden equipment
- Hand tools
- Measuring devices
- Power tools



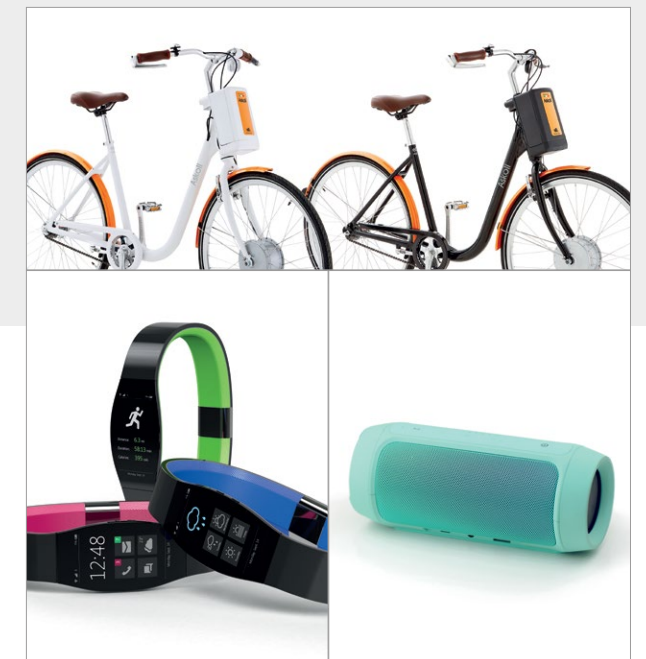
DRINKING WATER & SANITARY

- Gaskets
- Hoses
- Shower heads
- Sprinkler systems (garden, agriculture)



HOUSEHOLD APPLIANCES

- Cleaning devices
- Coffee machines
- Mixers
- Vacuum cleaners



CONSUMER ELECTRONICS

- E-scooters & e-bikes
- Home entertainment
- Music & audio devices
- Navigation devices
- Wearables & watches

APPLICATION AREAS

GETTING THE JOB DONE EVERYWHERE



ELECTRICS & ELECTRONICS

- Battery systems
- Grommets
- Plugs



WHITE GOODS

- Dishwasher
- Dryer
- Refrigerators



BUILDING & CONSTRUCTION

- Fire protection
- Gaskets
- Window and door seals

MATERIAL PROPERTIES

STAND-ALONE OR IN COMBINATION

ADHESION

Made for each other

Thanks to their optimized adhesion properties, TPEs can be used successfully in multi-material components. Nowadays, they are vital in the manufacturing of household appliances and power tools.

TACTILE QUALITIES

Feels more than good

Durability and surface feel are crucial qualities. A high surface quality offers products with added value. KRAIBURG TPE can adjust the formulas used in materials to influence the grip and touch qualities. As an example, TPEs are already used in a wide variety of handles.

COLORING BEHAVIOR

Setting colorful highlights

Visual impression counts. An engaging appearance always means added value. KRAIBURG TPE can match your own individual color to set yourself apart. Our inhouse coloring team provides the right shade of color for TPE compounds with great precision. All of our colors are high-quality and durable, and you can rely on our global supply security.



MATERIAL PROPERTIES

STAND-ALONE OR IN COMBINATION

ELASTIC RECOVERY

Reliable performance

Our TPEs offer optimized compression set characteristics – whether it is in delicately shaped seals for hearing aids or in sturdy components for household appliances and power tools. Specially developed compounds help ensure that end products comply with specific standards for watertightness and dustproofness.

FLAME PROTECTION

Safety: a hot topic

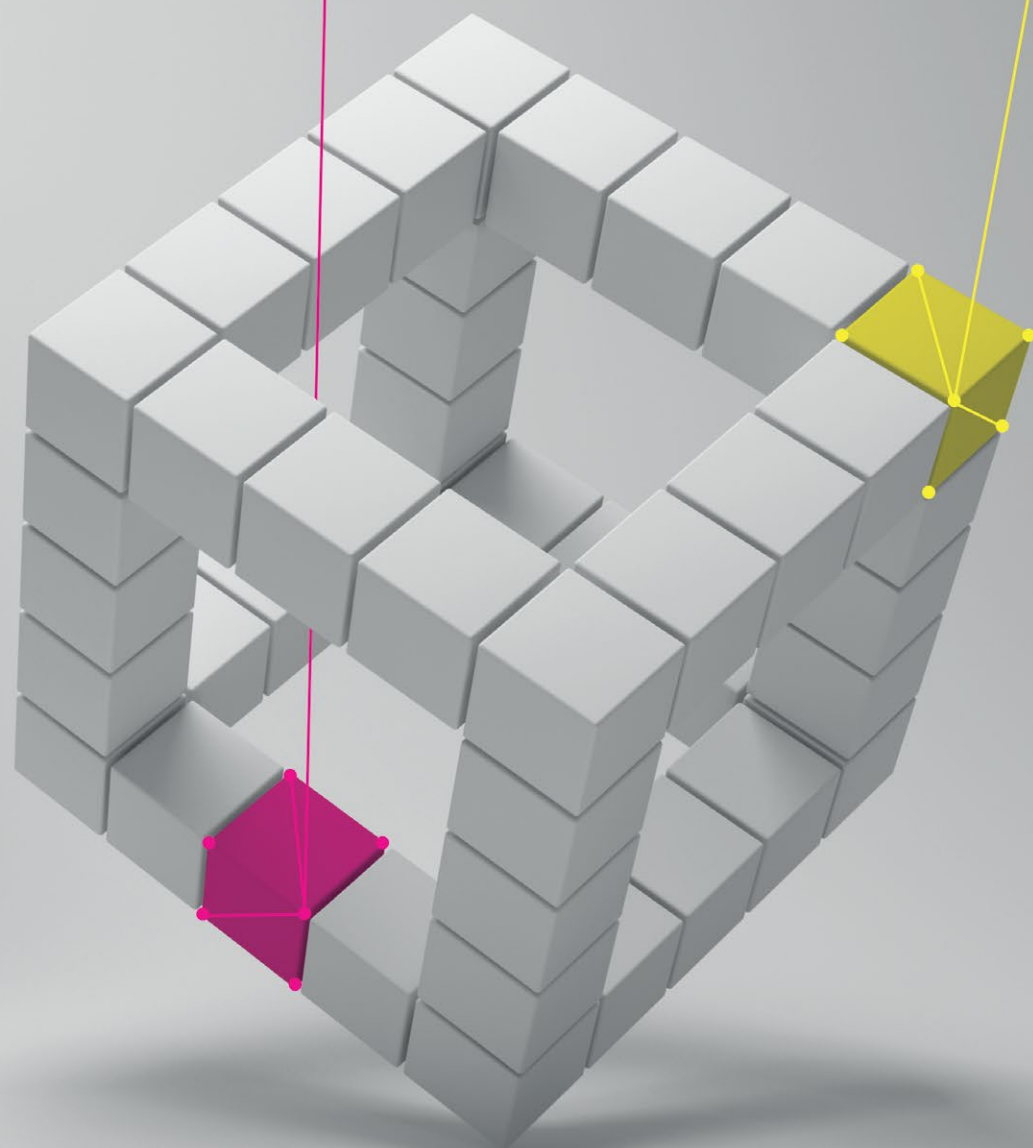
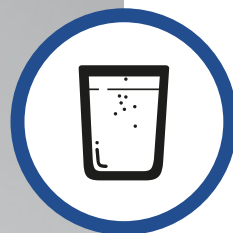
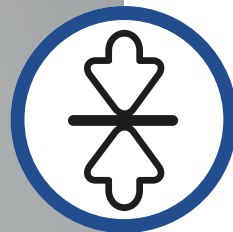
Fire protection is a constant topic in electrical and electronic applications of all kinds. KRAIBURG TPE takes environmental and health considerations into account by offering halogen-free fire protection system solutions according to IEC 61249-2-21.

DRINKING WATER

Tested and approved

Strict regulations require safe and intelligent material solutions. These TPEs have performed well in applications involving direct contact with drinking water such as tubes and fittings. They feature a low kinking tendency and excellent adhesion to PP and PE.

Meet most important European drinking water standard.



CUSTOM-ENGINEERED PROPERTIES

WHAT ARE YOUR REQUIREMENTS?

The TPE solutions are as multifaceted as the industry itself. Our compounds are established atop the industry in different sectors. For us, there is no such thing as a niche market.

Tell us about the challenges you may be facing while implementing your product idea and we will be pleased to help you improve your product's quality and functionality.

Have we left anything out that you need? Then feel free to contact us.





SERVICE

GOOD ADVICE IS INCLUDED

Your satisfaction is the standard we set for our work. To ensure the highest level of customer satisfaction, we have developed a quality assurance approach that covers the products, processes, and people involved. Our laboratories are designed and equipped to follow the latest state of the art technology.

In other words: you can tell us what challenges you are facing and we will dedicate ourselves to finding the best possible solution. Custom-engineered and extremely high-quality compounds provide the basis for this.

In addition, you will be able to benefit from our technical expertise, built up over many years of experience. Thanks to personal on-site consulting and unique global customer service, you will be able to enjoy the maximum support.



SUSTAINABILITY

ALWAYS LOOKING TO THE FUTURE

EXCELLENCE BY TRANSPARENCY

We rely on certified processes and established standards

KRAIBURG TPE acts and operates in accordance with recognized standards. **These are:**

- **Integrated quality, environment and energy management systems**
- **Certified GRS standard for products produced in Malaysia**
- **Product Carbon Footprint of KRAIBURG TPE-Compounds**
- **Climate targets based on the guidelines of the Sciences Based Target Initiative (SBTi):** Starting from the base year of 2021, the company's scope 1 and scope 2 CO₂e emissions are to be reduced by 46.2 percent by 2031, scope 3 CO₂e by 27.5 percent.
- **ISCC PLUS certification** available for many products in the EMEA sales region
- **Carbon Disclosure Project (CDP)** rating since 2020
- **EcoVadis:** The platform classifies the sustainability of companies in holistic ratings. Our commitment to sustainability at our locations has been awarded "Gold" and "Silver" in the past.



TPE PORTFOLIO SERIES

INDUSTRY SECTOR

THERMOLAST® K	Adhesion Materials	Page
AD1	ABS, PC, PC/ABS	21
AD1/AP	ABS, PC, PC/ABS	21
AD1/AS	ABS, PC, PC/ABS	22
AD1/CS	ABS, PBT, PC, PC/ABS	22
AD/PA	PA	23
AD/PA/CS	PA	23
AD/POM	POM	24
CS	PP	24
EC	PP	25
EC/PA	PP	25
EX	PP	26
EX/UV	PP	26
FR2	PP	27
FR/AP	PP	27
GP/FG	PP	28
LW/CS/UV	PP	28
LW/UV	PP	29
VS/AD/HM	ABS, ASA, PA, PC, PC/ABS, SAN	29

THERMOLAST® R	Adhesion Materials	Page
RC/AD/PA	PA6, PA6.6	30
RC/AD1/AP	ABS, PC, PC/ABS	30
RC/FC/PCR/AP	PP	31
RC/PCR/AP	PP	31

THERMOLAST® DW	Adhesion Materials	Page
DW/CS2	PE, PP	32
DW/H2	PP	32

COPEC®	Adhesion Materials	Page
VS/AD1	ABS, ASA, PA, PC, PC/ABS, SAN	33

THERMOLAST® K

Series
AD1

The AD1 series is your material solution for applications with adhesion to polar thermoplastics such as ABS, PC and PC/ABS. The compounds are available in black and natural colors. Natural color variants can be colored in many different ways.

Processing Method : Extrusion, Injection Molding

Compound Name	Hardness	Color	Adhesion
TCxMLB	50 – 80 Shore A	Natural	ABS, PC, PC/ABS
TCxMLZ	50 – 80 Shore A	Black	
TCxMSB	30 – 40 Shore A	Natural	
TCxMSZ	30 – 40 Shore A	Black	

Typical Applications

- Bumpers
- Door sills
- Function and design elements
- Grommets
- Handles (tools and power tools, etc.)
- Seals
- Soft touch surface (thumb wheels, push buttons, switches)
- Thumb wheels

Material Advantages

- Adhesion to ABS, ASA, PC, PC/ABS, SAN
- Colorable
- Controlled level of emission and odor, suitable for automotive interior
- Insert molding possible
- Soft touch surface
- Soft, non-sticky haptic

Regulations / Approvals

- 49 CFR §571.302 (FMVSS 302)
- BMW GS 93042
- DIN 75201-B – Fogging
- DIN EN ISO 105-B06 Method 3
- Ford WSS-M2D507
- Mercedes-Benz DBL 5562
- Renault 03-10-104
- Stellantis B62 0300
- UL 94 HB
- VDA 270 B3 – Odor
- VW 50123

THERMOLAST® K

Series
AD1/AP

The AD1/AP series is your material solution for automotive interior or industry applications with adhesion to polar thermoplastics such as ABS, PC and PC/ABS for Asia Pacific Market. The compounds are available in black colors.

Processing Method : Injection Molding

Compound Name	Hardness	Color	Adhesion
TCxPGG-BLCK	50 – 80 Shore A	Black	ABS, PC, PC/ABS

Typical Applications

- Automotive Interior
- Bumpers
- Car mats
- Door sills
- Function and design elements
- Grommets
- Handles (hand tools and power tools etc.)
- Seals
- Soft touch surface (thumb wheels, push buttons, switches)
- Thumb wheels

Material Advantages

- Adhesion to ABS, PC, PC/ABS
- Adhesion to POM
- Automotive Interior UV Resistance
- Controlled level of emission and odor, suitable for automotive interior
- In-process recycling possible
- Insert molding possible
- Soft touch surface
- Temperature stability up to 90 °C

THERMOLAST® K

Series
AD1/AS

The AD1/AS series is your material solution for applications with static-dissipative requirements. The compounds have medium electrical resistance and good adhesion to ABS, PC and PC/ABS. The compounds are available in natural and colored variants.

Processing Method : Injection Molding

Compound Name	Hardness	Color	Adhesion
TCxPAS-BLCK	50 – 80 Shore A	Black	ABS, PC, PC/ABS
TCxPAS-NTRL	50 – 80 Shore A	Natural	

Typical Applications

- Cable clips
 - Cable holders
 - Electric and electronic components
 - Games consoles
- Handles (hand tools and power tools, etc.)
 - Robotics parts
 - Soft touch for grips, switches and mats

Material Advantages

- Adhesion to ABS, PC, PC/ABS
 - Colorable
 - Medium resistivity
 - Optimized mechanical properties
- Reduced dust build-up
 - Soft, non-sticky haptic
 - Temperature stability up to 80°C
 - Thermoplastic alternative to elastomers

THERMOLAST® K

Series
AD1/CS

The AD1/CS series is your material solution for applications with optimized compression set and adhesion to polar thermoplastics such as ABS, PC, PC/ABS, and PBT. The compounds are available in black and natural colors. Natural color variants can be colored in many different ways.

Processing Method : Extrusion, Injection Molding

Compound Name	Hardness	Color	Adhesion
TPxVCN	50 – 80 Shore A	Natural	ABS, PBT, PC, PC/ABS
TPxVCZ	50 – 80 Shore A	Black	

Typical Applications

- Bumpers
 - Cable clips
 - Function and design elements
- Grommets
 - Seals
 - Soft touch surface (thumb wheels, push buttons, switches)

Material Advantages

- Adhesion to ABS, ASA, PC, PC/ABS, SAN
 - Adhesion to PBT
- Optimized compression set
 - Optimized mechanical properties

Regulations / Approvals

- 49 CFR §571.302 (FMVSS 302)
 - BMW GS 93042
 - Mercedes-Benz DBL 5562
- Stellantis B62 0300
 - UL 94 HB
 - VW 50123

THERMOLAST® K

Series
AD/PA

The AD/PA series is your material solution for applications with adhesion to PA. The compounds are available in black and natural colors. Natural color variants can be colored in many different ways.

Processing Method : Injection Molding

Compound Name	Hardness	Color	Adhesion
TCxPAN	20 – 80 Shore A	Natural	PA
TCxPAZ	20 – 80 Shore A	Black	

Typical Applications

- Cable clips
 - Function and design elements
 - Grommets
- Handles (hand tools and power tools, etc.)
 - Thumb wheels

Material Advantages

- Adhesion to PA6 and PA6.6, up to 50% glass fiber
 - Adhesion to PA12
 - Colorable
- Dry haptic
 - Halogen-free (according to IEC 61249-2-21)
 - Temperature stability up to 90 °C

Regulations / Approvals

- 49 CFR §571.302 (FMVSS 302)
 - BMW GS 93042
 - DIN 75201-B – Fogging
 - DIN EN ISO 105-B06 Method 3
 - GM GMW15702
- Mercedes-Benz DBL 5562
 - Renault 03-10-104
 - Stellantis B62 0300
 - UL 94 HB
 - VW 50123

THERMOLAST® K

Series
AD/PA/CS

The AD/PA/CS series is your material solution for applications with excellent adhesion to PA and sealing function. The compounds are available in black and natural colors. Natural color variants can be colored in many different ways.

Processing Method : Extrusion, Injection Molding

Compound Name	Hardness	Color	Adhesion
TCxPCN	40 – 80 Shore A	Natural	PA
TCxPCZ	35 – 75 Shore A	Black	

Typical Applications

- Cable clips
 - Fastenings
 - Grommets
- Membranes
 - Seals

Material Advantages

- Adhesion to PA6 and PA6.6, up to 50% glass fiber
 - Optimized compression set
- Optimized flow properties

Regulations / Approvals

- BMW GS 93042
 - GM GMW15702
 - Mercedes-Benz DBL 5562
 - Renault 03-10-104
- Stellantis B62 0300
 - UL 94 HB
 - VW 50123

THERMOLAST® K

Series
AD/POM

The AD/POM series is your material solution for applications with adhesion to POM. The compounds are available in black and natural colors. Natural color variants can be colored in many different ways.

Processing Method : Extrusion, Injection Molding

Compound Name	Hardness	Color	Adhesion
TCxHAA	50 – 80 Shore A	Natural	POM
TCxHAZ	50 – 80 Shore A	Black	
TCxHBA	60 – 70 Shore A	Natural	
TCxHBZ	60 – 70 Shore A	Black	

Typical Applications

- Bumpers
 - Components for conveying systems
 - Function and design elements
- Handles (tools and power tools, etc.)
 - Thumb wheels

Material Advantages

- Adhesion to POM
 - Colorable
- Soft touch surface

Regulations / Approvals

- 49 CFR §571.302 (FMVSS 302)
 - BMW GS 93042
 - DIN 75201-B – Fogging
 - DIN EN ISO 105-B06 Method 3
 - GM GMW15702
- Mercedes-Benz DBL 5562
 - Renault 03-10-104
 - VDA 270 B3 – Odor
 - VW 50123

THERMOLAST® K

Series
CS

The CS series is your material solution for sealing applications with adhesion to PP. The compounds are available in black and natural colors. Natural color variants can be colored in many different ways.

Processing Method : Extrusion, Injection Molding

Compound Name	Hardness	Color	Adhesion
TCxCSN	30 – 90 Shore A	Natural	PP
TCXCSZ	30 – 90 Shore A	Black	

Typical Applications

- Applications in e-mobility
 - Bumpers
 - Cable clips
 - Fastenings
- Grommets
 - Membranes
 - Seals

Material Advantages

- Adhesion to PP
 - In-process recycling possible
 - Optimized compression set
- Optimized mechanical properties
 - Optimized resilience
 - Resistance to polar coolants

Regulations / Approvals

- 49 CFR §571.302 (FMVSS 302)
 - BMW GS 93042
 - DIN 75201-B - Fogging
 - Mercedes-Benz DBL 5562
 - PV 3929 Kalahari (1 year)
 - PV 3929 Kalahari (2 years)
 - PV 3930 Florida (1 year)
- PV 3930 Florida (2 years)
 - Renault 03-10-104
 - Stellantis B62 0300
 - Stellantis MS-DC-242
 - UL 94 HB
 - VW 50123

THERMOLAST® K

Series
EC

The EC series is your material solution for applications with increased requirements on electrical conductivity. The materials come with very low resistivity and adhesion to polypropylene. The compounds are halogen-free according to IEC 61249-2-21. They are available in black colors only.

Processing Method : Extrusion, Injection Molding

Compound Name	Hardness	Color	Adhesion
TCx0EX-BLCK	70 – 80 Shore A	Black	PP

Typical Applications

- Dead man's switches
 - Electric and electronic components
 - ESD protection
 - Flexible conductors
- Grip applications
 - Grommets
 - Sensors
 - Stylus

Material Advantages

- Adhesion to PP
 - Electrical conductivity
 - Halogen-free (according to IEC 61249-2-21)
- In-process recycling possible
 - Low resistivity
 - Soft, non-sticky haptic

THERMOLAST® K

Series
EC/PA

The EC/PA series is your material solution for applications with requirements on electrical conductivity. The materials come with low resistivity and adhesion to polyamides and polypropylene. The compounds are halogen-free according to IEC 61249-2-21. They are available in black colors only.

Processing Method : Injection Molding

Compound Name	Hardness	Color	Adhesion
TCxNEG-BLCK	70 – 80 Shore A	Black	PP

Typical Applications

- Dead man's switches
 - Electric and electronic components
 - ESD protection
 - Flexible conductors
- Grip applications
 - Grommets
 - Sensors
 - Stylus

Material Advantages

- Adhesion to PP
 - Adhesion to PA6 and PA6.6
 - Electrical conductivity
 - Halogen-free (according to IEC 61249-2-21)
- In-process recycling possible
 - Low resistivity
 - Soft, non-sticky haptic

THERMOLAST® K

Series
EX

The EX series is your material solution for indoor extrusion applications. The compounds are available in black and natural colors. Natural color variants can be colored in many different ways.

Processing Method : Extrusion, Injection Molding

Compound Name	Hardness	Color	Adhesion
TPxCDB TPxCDZ	30 – 90 Shore A 30 – 90 Shore A	Natural Black	PP

Typical Applications

- Distance profiles
- Edge guards

- Profiles for furniture
- Seals for doors

Material Advantages

- Adhesion to PP
 - Alternative material to PVC-P
 - Halogen-free (according to IEC 61249-2-21)
 - In-process recycling possible
- No interaction with other materials (e.g. PVC-U, PC, PMMA)
 - Resistance to acrylic paints
 - Weldable (Infrared & Mirror)

THERMOLAST® K

Series
EX/UV

The EX/UV series is your material solution for extrusion applications with increased requirements for UV resistance. The compounds are available in black, grey and natural colors. Natural color variants can be colored in many different ways. Some compounds of the series are approved according to RAL GZ 716 and/or CSTB QB36.

Processing Method : Extrusion, Injection Molding

Compound Name	Hardness	Color	Adhesion
TPxHPG TPxHPN TPxSKZ	50 - 70 Shore A 50 - 90 Shore A 50 - 70 Shore A	Grey Natural Black	PP

Typical Applications

- Distance profiles
- Door and window seals for outdoor applications

- Edge guards

Material Advantages

- Adhesion to PP
 - Alternative material to PVC-P
 - Halogen-free (according to IEC 61249-2-21)
 - In-process recycling possible
- No interaction with other materials (e.g. PVC-U, PC, PMMA)
 - Resistance to acrylic paints
 - UV and weathering resistance
 - Weldable (Infrared & Mirror)

Regulations / Approvals

- CSTB QB36

- RAL-GZ 716

THERMOLAST® K

Series
FR/AP

The FR/AP series is your material solution for applications with flame retardant requirements for the Asia Pacific market. The compounds are halogen-free according to IEC 61249-2-21. The UL94 V-0 (3.0 mm) certificate is valid for available hardness range and for natural and coloured compounds.

Processing Method : Extrusion, Injection Molding

Compound Name	Hardness	Color	Adhesion
TCxFLN TCxFLZ	40 – 90 Shore A 40 – 90 Shore A	Natural Black	PP

Typical Applications

- Cable management systems e.g. cable holders, cable glands and grommets

- Gaskets for electric and electronic applications e.g. cable boxes

Material Advantages

- Adhesion to PP
 - Halogen-free (according to IEC 61249-2-21)
 - High glow-wire flammability index (GWFI)
 - In-process recycling possible
- Precoloration in all colors
 - Self-extinguishing, no release of burning droplets
 - Temperature stability up to 85 °C

Regulations / Approvals

- UL 94 V-0 (3 mm)

THERMOLAST® K

Series
FR2

The FR2 series is your material solution for applications with high flame-retardant requirements. The compounds are halogen-free according to IEC 61249-2-21. The UL94 V-0 (1.5 mm) certificate and the classification according to DIN EN 45545-2 R22 HL2 and DIN EN 45545-2 R23 HL3 is valid for available hardness range and for natural and colored compounds.

Processing Method : Extrusion, Injection Molding

Compound Name	Hardness	Color	Adhesion
TCxFTN TCxFTZ	50 – 90 Shore A / 40 Shore D 50 – 90 Shore A / 40 Shore D	Natural Black	PP

Typical Applications

- Applications in railway sector
- Cable management systems e.g. cable holders, cable glands and grommets

- Electrical insulation for busbars
- Gaskets for electric and electronic applications e.g. cable boxes

Material Advantages

- Adhesion to PP
 - Fulfills railway requirements such as high LOI, low toxicity and smoke density
 - Halogen-free (according to IEC 61249-2-21)
 - High glow-wire flammability index (GWFI)
 - In-process recycling possible
- No silicones added
 - Precoloration in all colors
 - Self-extinguishing, no release of burning droplets
 - Stability in conditions up to 60 °C and 75% humidity
 - Temperature stability up to 85 °C

Regulations / Approvals

- DIN EN 45545-2 R22 HL2
- DIN EN 45545-2 R23 HL3
- DIN EN 45545-2 R26

- IEC 60695-2-12:2021-10 (GWFI) 960 °C / 2 mm
- UL 94 V-0 (1.5 mm)

THERMOLAST® K

Series
GP/FG

The GP/FG series is your material solution for a variety of applications. It is suitable for automotive interiors. The compounds are available in black and natural colors. Natural colored variants can be colored in many different ways.

Processing Method : Extrusion, Injection Molding

Compound Name	Hardness	Color	Adhesion
TCxGPN TCxGPZ	20 – 90 Shore A / 33 Shore D 20 – 90 Shore A / 34 Shore D	Natural Black	PP

Typical Applications

- Air flap control
- Air guide elements
- Bumpers
- Cable clips
- Car mats

- Fasteners
- Handles (tools and power tools, adjustment lever, etc.)
- Joint sealing
- Seals for housings

Material Advantages

- Adhesion to PP
- Colorable
- Controlled level of emission and odor, suitable for automotive interior
- Dry haptics

- Halogen-free (according to IEC 61249-2-21)
- In-process recycling possible
- Optimized mechanical properties
- Soft touch surface

Regulations / Approvals

- 49 CFR §571.302 (FMVSS 302)
- BMW GS 93042
- DIN 75201-B – Fogging
- DIN EN ISO 105-B06 Method 3
- Ford WSS-M2D507
- Ford WSS-M2D516
- GM GMW15702
- Mercedes-Benz DBL 5562

- PV 3929 Kalahari (1 year)
- PV 3930 Florida (1 year)
- Renault 03-10-104
- Stellantis B62 0300
- UL 94 HB
- VDA 270 B3 – Odor
- VW 50123

THERMOLAST® K

Series
LW/CS/UV

The LW/CS/UV Series is your lightweight material solution for applications with superior requirements on sealing performance. The compounds are especially suited for automotive exterior applications. They are available in black colors.

Processing Method : Extrusion, Injection Molding

Compound Name	Hardness	Color	Adhesion
TLxOCW-BLCK	35 – 75 Shore A	Black	PP

Typical Applications

- Automotive Exterior
- Bumpers
- Glass Run Channel
- Grommets

- Heavy-walled parts
- Seals
- Seals for windows and doors

Material Advantages

- Adhesion to PP
- In-process recycling possible
- Low density
- Low shrinkage properties
- Low tendency to warpage

- Non-sticky surface
- Optimized compression set
- Resilience
- UV and weathering resistance

Regulations / Approvals

- 49 CFR §571.302 (FMVSS 302)
- Mercedes-Benz DBL 5562
- Outdoor Weathering Arizona 12 month SAE J1976
- Outdoor Weathering Arizona 24 month SAE J1976
- Outdoor Weathering Florida 12 month SAE J1976
- Outdoor Weathering Florida 24 month SAE J1976

- PV 3929 Kalahari (1 year)
- PV 3929 Kalahari (2 years)
- PV 3930 Florida (1 year)
- PV 3930 Florida (2 years)
- VW 50123

THERMOLAST® K

Series
LW/UV

The LW/UV Series is your lightweight material solution for applications with high UV- and weathering resistance, especially in automotive exterior. The compounds are available in black colors.

Processing Method : Extrusion, Injection Molding

Compound Name	Hardness	Color	Adhesion
TLxOWG-BLCK	60 – 80 Shore A	Black	PP

Typical Applications

- Automotive Exterior
- Bumpers
- Cowls gaskets
- Edge guards

- Function and design elements
- Heavy-walled parts
- Roof racks
- Water deflectors

Material Advantages

- Adhesion to PP
- In-process recycling possible
- Low density
- Low shrinkage properties

- Low tendency to warpage
- Non-sticky surface
- UV and weathering resistance

Regulations / Approvals

- 49 CFR §571.302 (FMVSS 302)
- Mercedes-Benz DBL 5562
- Outdoor Weathering Arizona 12 month SAE J1976
- Outdoor Weathering Arizona 24 month SAE J1976
- Outdoor Weathering Florida 12 month SAE J1976

- Outdoor Weathering Florida 24 month SAE J1976
- PV 3929 Kalahari (1 year)
- PV 3929 Kalahari (2 years)
- PV 3930 Florida (1 year)
- PV 3930 Florida (2 years)

THERMOLAST® K

Series
VS/AD/HM

The VS/AD/HM series is your material solution for applications with velvety surfaces and wear high resistance requirements. It convinces by its adhesion properties to polar thermoplastics as well as by its resistance to nonpolar substances, especially sebum skin grease and skin oils. The compounds are available in black and natural colors. Natural color variants can be colored in many different ways.

Processing Method : Extrusion, Injection Molding

Compound Name	Hardness	Color	Adhesion
TCxCEN TCxCEU TCxCEZ	40 – 80 Shore A 60 – 80 Shore A 40 – 80 Shore A	Natural Natural Black	ABS, ASA, PA, PC, PC/ABS, SAN

Typical Applications

- Automotive interior
- Car mats
- Cell phone covers
- Earphones
- Function and design elements

- Handles (tools and power tools, etc.)
- Remote controls
- Soft touch surface (thumb wheels, push buttons, switches)
- Wearables

Material Advantages

- Abrasion resistance
- Adhesion to ABS, ASA, PA, PC, PC/ABS, SAN
- Adhesion to PA6 and PA12
- Halogen content (chlorine + bromine) < 900 ppm

- Optimized mechanical properties
- Resistance to skin oils, sunscreen or olive oil
- Scratch resistance
- Soft, velvety feel

Regulations / Approvals

- BMW GS 93042
- ISO 10993-10 (Skin irritation)
- Mercedes-Benz DBL 5562
- Renault 03-10-104
- Stellantis B62 0300

- Stellantis MS-DC-242
- TESLA TM-1010
- UL 94 HB
- VW 50123

THERMOLAST® R

Series
RC/AD/PA

The RC/AD/PA series is your material solution with a PCR/PIR content of > 43% for a variety of applications with adhesion to PA. The compounds are available in natural colors and can be colored in many different ways.

Processing Method : Injection Molding

Compound Name	Hardness	Color	Adhesion
RRxNGD-NTRL	40 – 90 Shore A	Natural	PA6, PA6.6

Typical Applications

- Fasteners
 - Function and design elements
 - Grip applications
- Over molded housing
 - Soft touch

Material Advantages

- Adhesion to PA6 and PA6.6
 - Colorable
 - In-process recycling possible
 - Recycled raw material content
- Recycling-specific raw material influences are possible
 - Reduced PCF compared to virgin compound
 - Sustainable material

THERMOLAST® R

Series
RC/AD1/AP

The RC/AD1/AP series is your material solution with a hardness-dependent post-industrial recycled content of 34 - 50% for applications with adhesion to ABS, PC and PC/ABS for the Asian Pacific market. The compounds are suitable for consumer electronic applications and are available in black and natural colors. Pre-coloration is possible.

Processing Method : Injection Molding

Compound Name	Hardness	Color	Adhesion
RixPGM-BLCK	60 – 80 Shore A	Black	ABS, PC, PC/ABS
RixPGM-NTRL	60 – 80 Shore A	Natural	

Typical Applications

- Earphones
 - Function and design elements
 - Games consoles
 - Handles (tools, toolboxes, ski poles)
 - Handles and grips for consumer applications
- Household articles
 - Remote controls
 - Soft touch surface (thumb wheels, push buttons, switches)
 - Wearables

Material Advantages

- Adhesion to ABS, PC, PC/ABS
 - Colorable
 - Non-sticky surface
- Optimized mechanical properties
 - Smooth touch
 - Sustainable material

THERMOLAST® R

Series
RC/FC/PCR/AP

The RC/FC/PCR/AP series is your material solution with a post-consumer recycled content of 9 - 38 % (hardness-dependent) for a variety of applications with adhesion to PP or for single component parts in Asia Pacific. The compounds are available in natural colors and precoloration is possible.

Processing Method : Injection Molding

Compound Name	Hardness	Color	Adhesion
RFxOGM-LCNT	30 – 90 Shore A	Translucent Natural	pp
RFxOGM-NTRL	30 – 90 Shore A		

Typical Applications

- Function and design elements
 - Grip applications
 - Handles and grips for consumer applications
 - Household articles
- Razors
 - Seals for housings
 - Toothbrushes
 - Toys

Material Advantages

- Adhesion to PP
 - Alternative material to EPDM and PVC-P
 - Colorable
 - Non-sticky surface
 - Optimized mechanical properties
 - Precoloration in all colors
- Recycled raw material content
 - Soft, non-sticky haptic
 - Sustainable material
 - Temperature stability up to 80 °C
 - Thermoplastic alternative to elastomers

Regulations / Approvals

- GRS certified compound
- US FDA CFR 21 (raw material conformity)

THERMOLAST® R

Series
RC/PCR/AP

The RC/PCR/AP series is your material solution with a post-consumer recycled content of 25 - 48% (hardness-dependent) for a variety of applications with adhesion to PP or for single component parts for Asia Pacific Market. The compounds are available in black colors.

Processing Method : Injection Molding

Compound Name	Hardness	Color	Adhesion
RCxOGM-BLCK	50 – 90 Shore A	Black	PP

Typical Applications

- Cable clips
 - Connectors
 - Electric and electronic components
 - Function and design elements
- Grip applications
 - Grommets
 - Handles (hand tools and power tools etc.)

Material Advantages

- Adhesion to PP
 - Alternative material to EPDM and PVC-P
 - Non-sticky surface
 - Optimized mechanical properties
- Recycled raw material content
 - Sustainable material
 - Temperature stability up to 80 °C
 - Thermoplastic alternative to elastomers

Regulations / Approvals

- GRS certified compound

THERMOLAST® DW

Series
DW/CS2

The DW/CS2 series is your material solution in contact with drinking water for gasket, shower head jet former, fitting, membrane and design applications. The compounds meet the requirements of the most important European drinking water standards and are certified for P1 and P2 applications acc. to KTW-BWGL for cold, warm and hot water. They are translucent and are available in many different colors on request.

Processing Method : Injection Molding

Compound Name	Hardness	Color	Adhesion
DWxOCX-LCNT	50 – 85 Shore A 35 Shore D	Translucent Translucent	PE, PP

Typical Applications

- Components for irrigation systems
- Filter applications
- Flexible Connections
- Gaskets
- Jet former

- Membranes
- Seals, functional and design elements in sanitary sector
- Soft touch
- Valve parts

Material Advantages

- Adhesion to PE, PP
- Colorable
- Demolding
- Elasticity
- Low density
- Low migration potential

- Optimized compression set at high temperatures
- Optimized flow properties
- Optimized mechanical properties
- Resistance to microbes
- Temperature stability up to 85 °C

Regulations / Approvals

- KTW-BWGL P2/P3 certification
- KTW-BWGL P1 partly certification
- KTW-BWGL for hot water (85°C)

- KTW-BWGL for cold water (23 °C)
- Regulation (EU) No 10/2011
- WRAS (BS6920)

THERMOLAST® DW

Series
DW/H2

The DW/H2 series is your material solution for hoses in contact with drinking water in sanitary and household applications. The compounds meet the requirements of the most important European drinking water standards such as KTW-BWGL. They are translucent and are available in many different colors on request.

Processing Method : Extrusion, Injection Molding

Compound Name	Hardness	Color	Adhesion
DWxHTU-LCNT DWxHTV-LCNT	75 – 85 Shore A 70 – 90 Shore A 40 Shore D	Translucent Translucent Translucent	PP

Typical Applications

- Hoses
- Hoses for food application
- Hoses for household appliances

- Pressurized tubes
- Shower hoses

Material Advantages

- Adhesion to PP
- Alternative material to PVC
- Colorable
- High elasticity
- Low density
- Low kinking tendency

- Low migration potential
- Low surface friction
- Non-sticky surface
- Optimized mechanical properties
- Resistance to microbes

Regulations / Approvals

- ACS (DGS/VS4 n° 200/232)
- Regulation (EU) No 10/2011

- WRAS (BS6920)

COPEC®

Series
VS/AD1

The VS/AD1 series is your material solution for consumer electronics applications. It is characterized by a silky and velvety surface. The compounds convince by their adhesion to polar thermoplastics such as ABS, PC or PC/ABS. They are available in black and natural. Naturally colored variants can be coloured in many different ways.

Processing Method : Extrusion, Injection Molding

Compound Name	Hardness	Color	Adhesion
CCxOCN CCxOCZ	60 – 80 Shore A 60 – 80 Shore A	Natural Black	ABS, ASA, PA, PC/ABS, SAN

Typical Applications

- Attenuators for electronic housings
- Cell phone covers
- Earphones
- Games consoles
- Handles (tools and power tools, etc.)

- Handles and grips for consumer applications
- Remote controls
- Seals
- Wearables

Material Advantages

- Adhesion to ABS, ASA, PC, PC/ABS, SAN
- Color consistency
- Colorable
- Insert molding possible

- Resistance to skin oils, sunscreen or olive oil
- Soft touch surface
- Soft, velvety feel

Regulations / Approvals

- 49 CFR §571.302 (FMVSS 302)
- BMW GS 93042
- DIN 75201-B – Fogging
- DIN EN ISO 105-B06 Method 3
- Mercedes-Benz DBL 5562

- Stellantis B62 0300
- UL 94 HB
- VDA 270 B3 – Odor
- VW 50123



EUROPE, MIDDLE EAST, AFRICA

KRAIBURG TPE GmbH & Co. KG
Friedrich-Schmidt-Str. 2
84478 Waldkraiburg, Germany

☎ +49 8638 9810-0
✉ info@kraiburg-tpe.com

ASIA PACIFIC

KRAIBURG TPE Technology (M) SDN.BHD.
Lot 1839 Jalan KPB 6
Kawasan Perindustrian Balakong
43300 Seri Kembangan, Selangor, Malaysia

☎ +60 3 9545 6393
✉ info-asia@kraiburg-tpe.com

AMERICAS

KRAIBURG TPE Corporation
4365 Hamilton Mill Road
Buford, GA 30518, USA

☎ +1 678 584-5020
✉ info-america@kraiburg-tpe.com

For contact details of our branch offices and partners, see www.kraiburg-tpe.com. Member of the KRAIBURG Holding.

© Copyright 2025 KRAIBURG TPE. Subject to change without prior notice.

KRAIBURG TPE makes no warranties and assumes no liability in connection with any use of this information.

CMJM|||BR|EN|04|25-01