



# ENERGY, ENVIRONMENTAL PROTECTION, HEALTH AND SAFETY REPORT 2021

KRAIBURG TPE Corporation (USA)  
Location Buford

## PREFACE

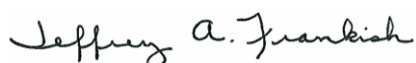
KRAIBURG TPE Corporation located in Buford, GA, has been certified in accordance with environmental standard ISO 14001 since 2014. Our Environmental Management System (EMS) is audited annually based on all applicable clauses of the standard. Our corporate policy clearly defines our commitment to environmental protection and preservation of natural resources which are aligned with our sustainability initiatives.

It is our goal as an organization to create a quality product that meets the needs of our customers but also be mindful of the preservation of the environment, natural resources and protection of our biggest asset, our employees.

We have developed performance objectives that focus on areas such as:

- Workplace Safety
- Energy Consumption
- Water Consumption
- Waste Management
- Safety Training

As our corporate policy states, we are a learning organization and we utilize data to serve as a basis for our continuous improvement.



**Jeff Frankish**

Managing Director Americas  
KRAIBURG TPE Corporation

## AREA OF APPLICATION

The parameters and assessment limits of the environmental management system at the KRAIBURG TPE Corporation site in Buford, GA, are defined as follows:

- Office, Operations and Warehouse

## WORKPLACE SAFETY AND HEALTH PROTECTION

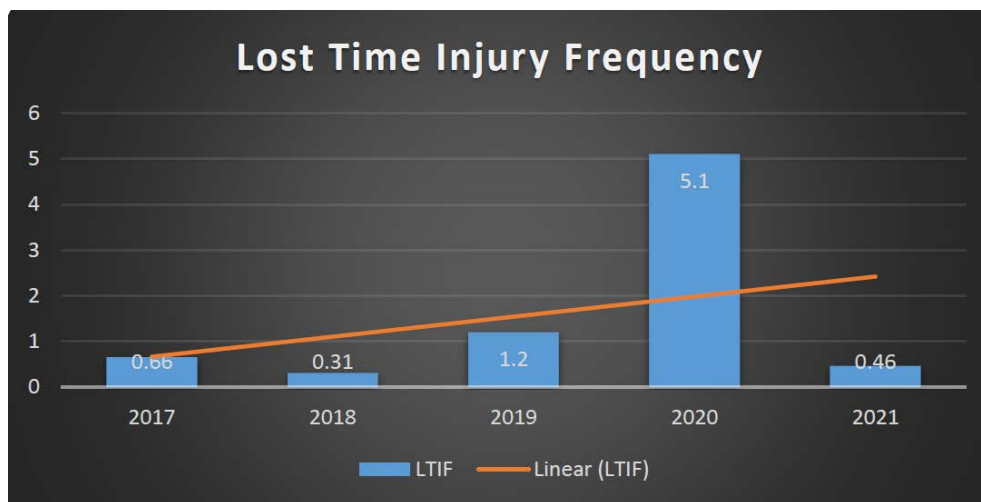
At KRAIBURG TPE, safety is a top priority. It is the responsibility of management, supervisors as well as every employee, to take all reasonable safety precautions and to protect and ensure the safety and well-being of others. Every employee must understand and follow safety regulations set forth by the company and be proactive in reporting any hazard he/she might observe.

Job Hazard Assessments (JHA) of the workplace are conducted to ensure all administrative, engineering and PPE controls are in place to minimize the risk of personal injury and that the overall health/safety of every employee is maintained. Support from external safety and environmental consultants are also utilized to ensure compliance to all local, state, and federal regulations.



## OCCUPATIONAL SAFETY AND HEALTH/ACCIDENTS

Whenever there is an accident, an extensive investigation is done to examine the cause of injury. All information pertaining to accidents is documented and shared with the Safety Committee to explore corrective actions and implementation of safe practices to ensure that there is not a repeat of the accident in the future. The key indicator used to determine our accidental risk is Lost Time Injury Frequency (LTIF) which shows the number of accidents per year that cause the employee to be absent from work. In 2021 we improved our (LTIF) through additional safety and legal compliance training.



\* LTIF results in 2020 were impacted due to a carryover from an employee injury that occurred late in 2019.

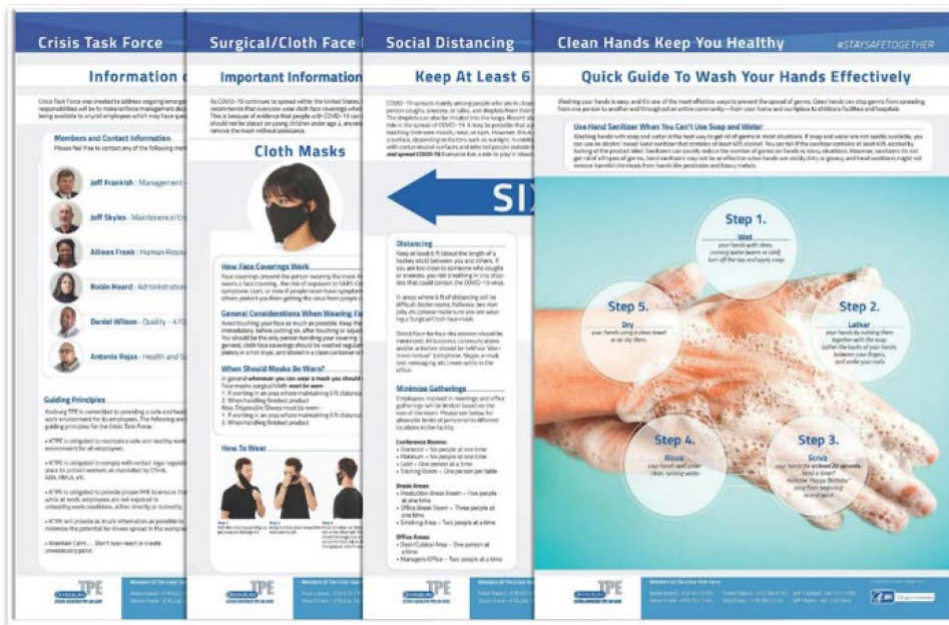
## MANAGEMENT OF HAZARDOUS MATERIALS

Based on in-house guidelines on hazardous substances, no harmful raw materials (e.g., carcinogenic, mutagenic, or acutely toxic substances) are used at KRAIBURG TPE. The organization will always look to substitutions to hazardous materials.

## PANDEMIC RESPONSE

In 2021 KRAIBURG TPE Corporation continued their KRAIBURG TPE CORPORATION Crisis Task Force to address ongoing/emergency situations at KRAIBURG TPE CORPORATION stemming from the COVID-19 pandemic. The team's guiding principles were to ensure the safety of every employee and complying to all local, state, and federal regulations with additional focus on topics such as vaccination availability.

Preventive and precautionary measures implemented to ensure the health and safety of all KRAIBURG employees were:



- PPE
- Hygiene
- Distancing/Spacing
- Facility Upgrades/Signage
- Procedures for Sick/III Employees
- Contact tracing
- Quarantining
- Infection control training
- Work schedule modifications
- Facility cleaning and disinfecting
- Industry best practices

Support from management, supervisors and employees was influential in the avoidance of an outbreak within the facility.

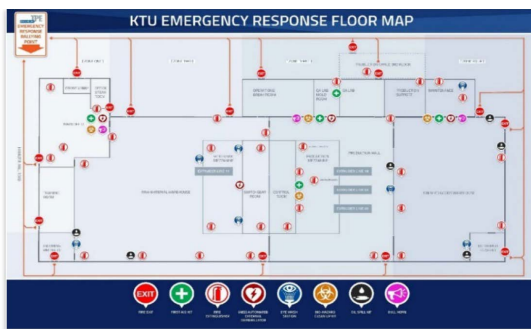
## NOISE PROTECTION

The operations area is monitored to follow federal regulations to protect our employees against potential effects of occupational noise exposure. We have developed a hearing conservation program consisting of six basic components:

- Exposure monitoring
- Research and implementation of Control Measures
- Hearing protection selection
- Audiometric testing
- Employee training
- Record keeping

## EMERGENCY MANAGEMENT

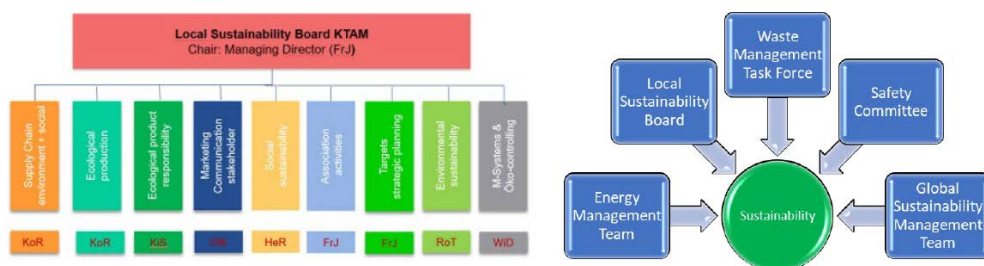
We have established a contingency and emergency response plan to manage emergency situations that can occur within the facility. Our First Responder Team is trained in handling emergency situations such as CPR, AED, First Aid, and fire extinguishing. Quarterly evacuation drills were completed to ensure that the evacuation procedure is understood and is effective.



## SUSTAINABILITY

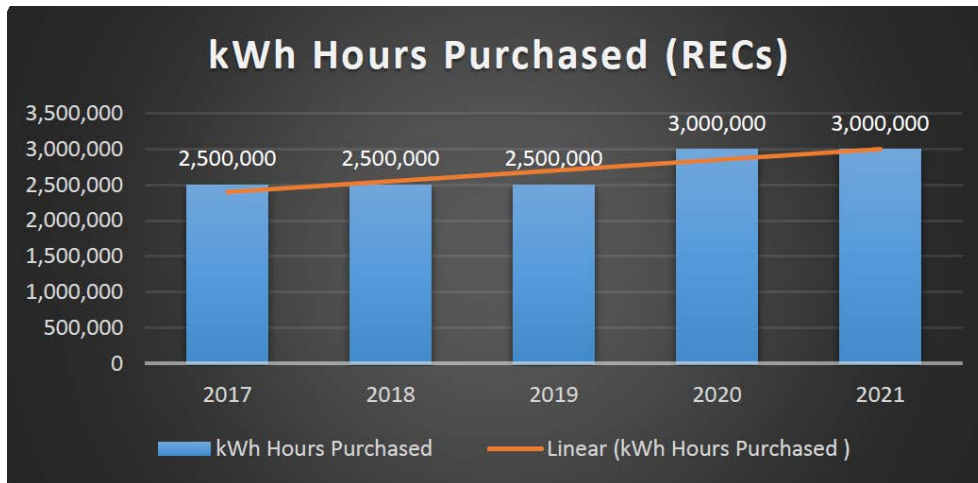
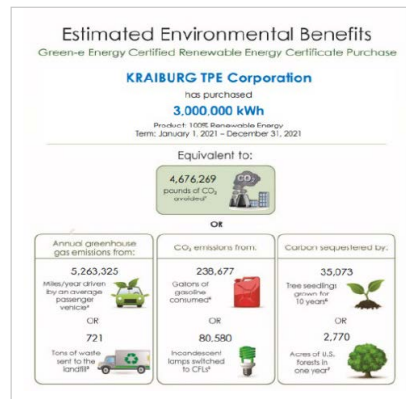
There were no environmental accidents with environmental effects in 2021. Annually we conduct an environmental aspect and impacts analysis which is used to identify the organization’s significant environmental aspects. Life Cycle Assessment (LCA) is done to investigate sustainable disposal methods for waste generated from the production of our finished goods.

- Conserve, protect, restore, and improve the supply and quality of natural resources and environmental media (energy, water, materials, ecosystems, land, and air) over the long term.
- Align and integrate programs, tools, incentives, and indicators to achieve as many positive outcomes as possible in environmental, economic, and social systems.
- Consider the full life cycles of multiple natural resources, processes, and pollutants to prevent pollution, reduce waste, and create a sustainable future.



## GREEN ENERGY

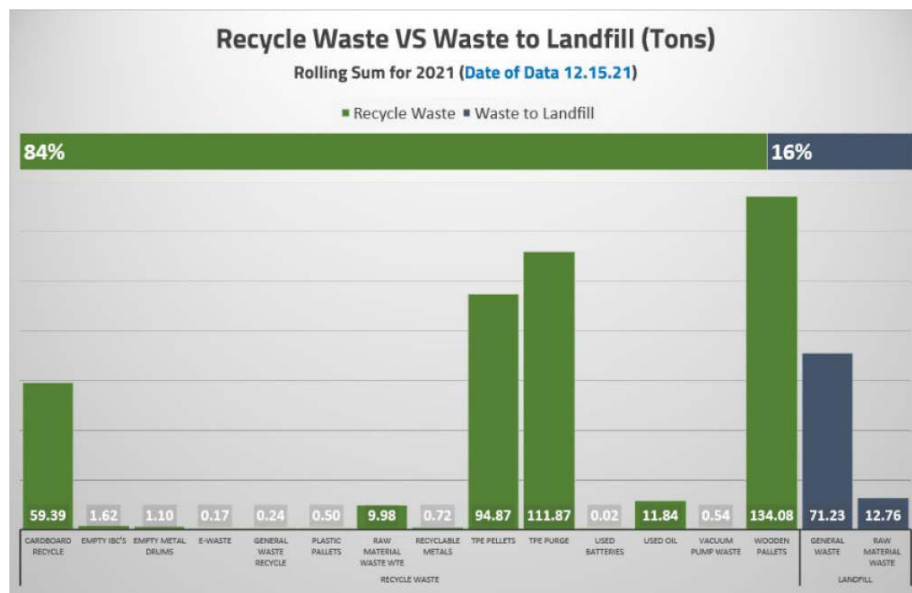
Annually, we purchase Renewable Energy Certificate (REC) as part of our sustainability efforts. The annual purchase guarantees that an equal amount of renewable energy is delivered to the electric grid aiding in the reduction of carbon dioxide emissions.





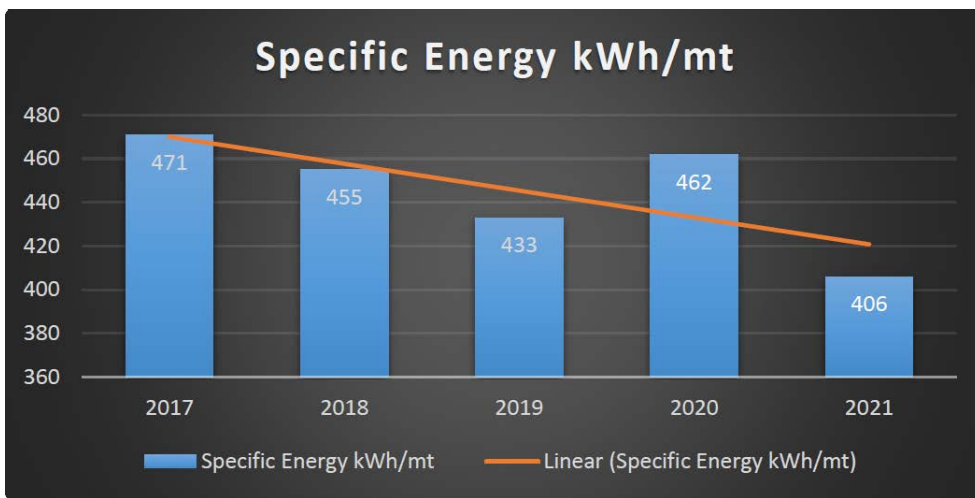
## WASTE MANAGEMENT

The disposal of waste continues to be a key focus for KRAIBURG TPE. The creation of our Waste Management Task Force has been successful in improving the identification and disposal of waste. The Task Force’s mission is to minimize the use of landfill for disposal and explore opportunities to partner with disposal vendors that can provide more environmentally friendly disposal methods. In August 2021, we shipped our first load of obsolete raw materials to a Waste-To-Energy (WTE) facility to reduce our impact on landfill disposal. In 2022, we will look to expand on this alternative disposal method for additional materials.



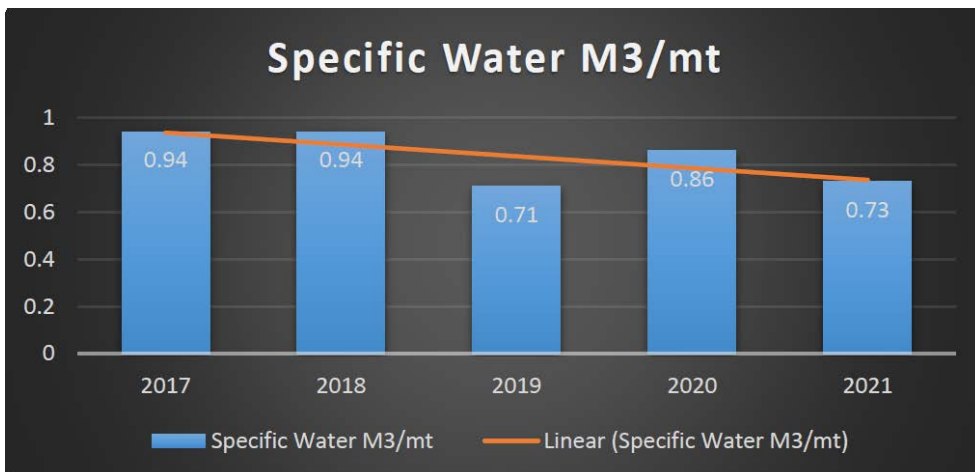
## SPECIFIC ENERGY CONSUMPTION

Specific energy consumption is measured monthly during energy management meetings utilizing our KBR energy measurement/monitoring system. In 2021, auxiliary auto-shutoffs were installed for extruder equipment to reduce energy consumption during cleanings, preventive maintenance, and facility shutdowns.



## SPECIFIC WATER CONSUMPTION

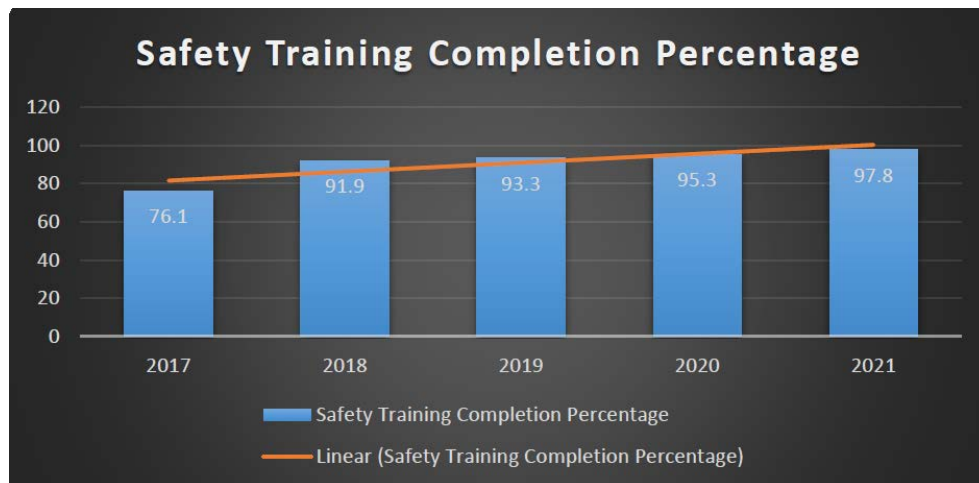
Specific water consumption is also measured utilizing the KBR measurement system. In 2021 we were able to identify opportunities to improve the water efficiency within our extruder lines.



## SAFETY TRAINING COMPLETION PERCENTAGE

KRAIBURG TPE CORPORATION has a strong commitment to maintaining a safe workplace for our internal and external employees. An annual safety training plan is developed to provide each employee with information on key safety topics such as:

- Emergency evacuation
- Hazard communication
- Ergonomics
- Injury and illness prevention



## 2021 INPUT/OUTPUT BALANCE SHEET

The balance sheet is a component of environmental reports and is recommended by ISO 14001. This sheet presents the important factors of the company's activities.

The following core indicators are used for the monitoring and control of performances. These key measurables enable a transparent presentation with respect to improvements, and effectiveness.

### 2021 INPUT/OUTPUT BALANCE SHEET FOR KRAIBURG TPE CORP. (USA).

Input	Quantity	Unit	Output	Quantity	Unit
Material consumption production	7,049	Mt	Production Quantity	6,970	Mt
Electricity	2,631	MWh	Waste	511	t
Natural Gas	4,833	CCF	Recyclable	427	t
Water	4,758	m <sup>3</sup>	Non-recyclable	84	t

## 2021 CORE INDICATORS FOR ENVIRONMENTAL PERFORMANCE AT THE BUFORD LOCATION

Indicators	Definition	Unit of Measure	Value
Energy efficiency	Electricity / production quantity	kWh/t	406
Water efficiency	Water / production quantity	m <sup>3</sup> /t	0.73
Waste	Waste / production quantity	kg /t	9.98
LTIF	Accident-related lost time x 1,000,000 / planned working hours	LTI	0.46
Safety Training Completion	Completed training X 100/Required training	%	97.8%

## 2022 CONTINUOUS IMPROVEMENT

EH&S
KRAIBURG TPE Americas Energy, EH&S Objectives & Targets 2022

<b>Reduce General Waste Disposal</b>		<ul style="list-style-type: none"> <li>Disposal of general waste at average ≤ 12.0kg/mt for 2022.</li> <li>Expand Awareness of "Cost of Waste" for KTU.</li> <li>Improve percentage of Recyclable waste &gt;80%</li> <li>Improve management and disposal of expired/unused Raw Materials.</li> </ul>
<b>Expand Health &amp; Safety</b>		<ul style="list-style-type: none"> <li>Achieve Safety &amp; Legal training percentage ≥ 99%.</li> <li>Achieve LTIF (Loss Time Injury Frequency) of ≤ 8.0</li> <li>Complete full scale LOTO inspection of all applicable equipment.</li> <li>Explore Health &amp; Wellness activities for KTU in 2022.</li> </ul>
<b>Achieve Reduction In Energy Consumption For Entire Site</b>		<ul style="list-style-type: none"> <li>Achieve target of ≤ 435kWh/mt for 2022.</li> <li>Complete verification of KBR energy monitoring system.</li> <li>Investigate ways to reduce Natural Gas Consumption.</li> <li>Maintain Specific Electricity Cost(\$) &lt;55</li> </ul>
<b>Achieve 100% Compliance for EHS obligations</b>		<ul style="list-style-type: none"> <li>Develop Environmental training topics relevant to KTU Operations.</li> <li>Completion of all monthly, quarterly and annual validations and inspections</li> <li>Implement SDS Kiosks to replace hard copy books within Operations.</li> </ul>

## SUMMARY

At KRAIBURG TPE Corporation, we are focused on minimizing environmental and continually striving to improve occupational health and safety. We are also committed to developing local sustainability initiatives to support our corporate strategy. Our policy of creating a safe workplace, conserving resources, reducing environmentally harmful waste and emissions are key to meeting our responsibility to present and future generations.

### Europe, Middle East, Africa

KRAIBURG TPE GmbH & Co. KG  
Friedrich-Schmidt-Str. 2  
84478 Waldkraiburg, Germany

Tel: +49 8638 9810-0  
info@kraiburg-tpe.com

### Asia Pacific

KRAIBURG TPE Technology (M) SDN.BHD.  
Lot 1839 Jalan KP6 6  
Kawasan Perindustrian Balakong  
43300 Seri Kembangan, Selangor, Malaysia

Tel: +60 3 9545 6393  
info-asia@kraiburg-tpe.com

### Americas

KRAIBURG TPE Corporation  
4365 Hamilton Mill Road  
Buford, GA 30518, USA

Tel: +1 678 584-5020  
info-america@kraiburg-tpe.com

